



We are now running our Summer event...

01757 249 950



Find us on
Facebook

www.eliments.co.uk

North Yorkshires leading home improvement company
where quality needn't cost the earth.



WE WILL BEAT ANY GENUINE QUOTE...

- **FREE** no obligation quotation
- **FREE 10 year** insurance backed guarantee.
(see Website for details)
- **After Sales** Service Second to none.
- All our products are high on **Security**
& **Energy Efficiency**.



The pursuit of harmony
Eliments

Bell Farm | Riccall Road (A19) | Escrick | York | YO19 6ED

(5 miles from designer outlet)

*Finance options available - Please ask for details

Free and Easy parking | Open 7 days a week

QUALITY • ORANGERY'S • CONSERVATORIES • DOORS • WINDOWS • FASCIA & SOFFITS



Escrick Park
ESTATE

Yours Naturally...



- ◇ Wedding venue for civil or celebrant services and marquee receptions.
- ◇ Office and workshops for commercial lets.
- ◇ Farmhouses and cottage residential lets
- ◇ Holiday Home Lodges to own in a beautiful sheltered woodland.
- ◇ Horse riding cross country and hacking course.



Tel: 01904 728252

website: www.escrick.com

Email: enquiries@escrick.com

'SLIPS

S PROFESSIONAL

STATIONERY

IM LOGO

DIVIDUAL SIGN

NTING

'SPOKE

AF

FAS PRINT LTD

SPECIAL
500 x A5
FLYERS £55
QUOTE CODE: MP2016
OFFER

Inject some
personality
into your print

not just putting ink on paper

01757 708478 - info@fasprint.biz - www.fasprint.biz

f www.fasprintfb.info in carolineandrewjohnstone @CJAJ_PRINT



The Fat Abbot

A fabulous new gastro pub in the
heart of Escrick, York

Locally sourced produce from local suppliers

.....
Gastro pub set in the grounds of the Parsonage
Hotel & Spa, Escrick on the outskirts of York

.....
Gastro style dishes and homemade classics

*We believe in serving great food, delivering the
right level of service and value for money.*

The Fat Abbot
Escrick
York
YO19 6LF

(t) 01904 728782
(e) info@thefatabbotyork.co.uk



FRANK ATKINSON

Some memories...

The Monday Players were founded by a group of people who were no strangers to the stage in Escrick, particularly so with Frank who was seen in many sketches at the Music Hall and was renowned for his dialect monologues. Who could forget his rendition of The Messiah? It was only natural that he should become a Monday Player, appearing in many of our productions, again enjoying making his audience laugh.



His LeClerc in 'Allo 'Allo was priceless. He was also priceless with off stage help. He found space at the farm to build and store our scenery and staging. With a couple of other senior members he would join in fixing and painting it for the next production, interspersed with a few cups of tea. They would joke that they were characters from "The Last of the Summer Wine", but which one was Compo? With a few more helping hands all was loaded onto a trailer and, with Frank at the wheel, tracted down to the village hall. We stood in awe as he reversed it into the car park and up to the back door of the hall.

For many years Frank relished being the caller for our raffles. With his kind, witty, humour the raffle soon became part of the entertainment, especially when he would time and again produce one of the Escrick millennium mugs as his bonus prize.

In recognition of everything Frank had done for the Monday Players he was given honorary membership of the Society in June 2012. Frank was our only honorary member and will be a hard act to follow.



There are so many happy memories of this kind, honourable, considerate, gentle man. He loved flying and would give a flight as a prize at the village fete. Those who flew with him, once they had given him a leg up into the plane, would never forget it.

He was resourceful too, and could produce a vital piece of timber to complete a stage set or lock the stage blocks with rope tightened expertly with sheeting knots.

Whenever a compliment, thanks, or a gift was given to Frank, his genuine response was "Bless you dear". As our huge thanks to this very special and much loved man we say "Bless you Frank".

CHAIR'S MESSAGE

Welcome to our 'two for one' play offering!

It's that time of year again and I am delighted to introduce our latest 'value for money' entertainment!

You may or may not have noticed that our planned production of *The Importance of Being Earnest* will now be performed in November. A little local play known as York Mystery Plays nobbled some of our cast; we did fleetingly discuss having an all-female ensemble...we thought better of it!

We will now be presenting two one-act plays: *A Respectable Funeral* (a play with some funny bits) and *Last Tango in Escrick* (a comedy with absolutely no serious bits). We hope you enjoy a few drinks at the start, middle and end of the evening too.

On a sadder note, the society would like to pay tribute to our very dear friend Frank Atkinson who sadly passed away earlier this year. We have included some of our memories in a page dedicated to Frank which I hope brings a smile to your face, as it did ours.

In addition, those of you who knew Frank will remember his Olivier Award winning performances when drawing our raffle! The society have decided to honour him by way of a lasting memorial. Our raffle will now be known as *The Frank Atkinson Raffle* - we do so with the kind blessing of Frank's family.

I would also like to take this opportunity to extend a very warm welcome to our newest member Karen McLeod.

And finally, thank you to our audience and sponsors for your continued support and patronage. It is, as always, greatly appreciated. I hope you enjoy our plays!

Nicki



PAST PRODUCTIONS

1993

Dec Season's Greetings

1995

May The Happiest Days Of Your Life

1996

Feb When We Are Married

Nov Fish Out Of Water

1997

May Breath Of Spring

Nov Bedroom Farce

1998

May Suddenly At Home

Nov Flying Feathers

1999

May Cabaret Evening

Nov Stepping Out

2000

Apr The Farndale Avenue Housing
Estate Townswomen's Guild
Dramatic Society Murder Mystery

Jun Millennium Cabaret

Nov Celebration

2001

May Last Tango In Whitby

Nov Fringe Benefits

2002

Jun Separate Tables / Dress Rehearsal

2003

Jan Red Riding Hood

May Joking Apart

Nov Blithe Spirit

2004

Mar Sand Castles

Jun Cabaret 2004

Nov Daisy Pulls It Off

2005

May 'Allo 'Allo

Nov Lord Arthur Savile's Crime

2006

May Witness For The Prosecution

Nov Party Piece

2007

May Outside Edge

Nov Caramba's Revenge

2008

Apr Comic Potential

Nov Angels In Love

2009

May Cabaret 2009

Nov Natural Causes

2010

May Pygmalion

Nov Taking Steps

2011

May Habeas Corpus

Nov Role Play

2012

May Diamond Jubilee Cabaret

Nov Key For Two

2013

May Ladies' Day

Nov Season's Greetings

2014

May Salt Of The Earth

Nov Relative Values

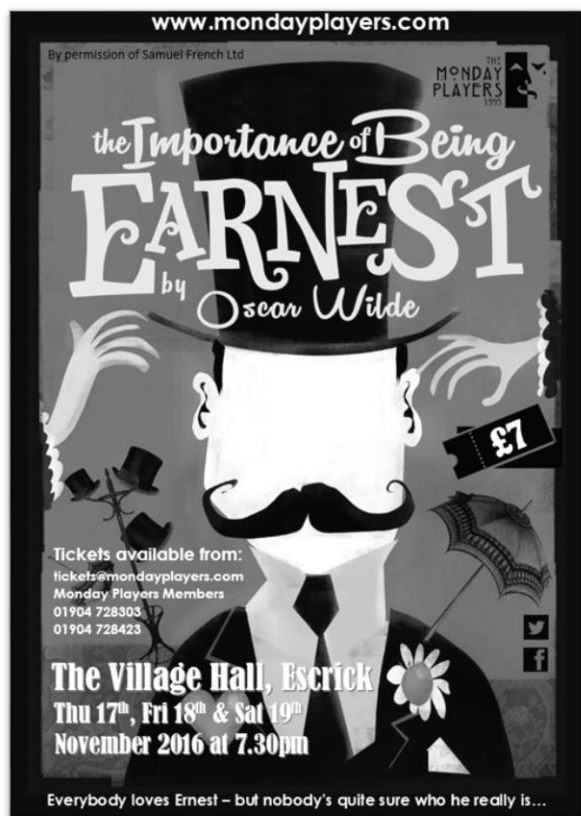
2015

May The Odd Couple

Nov Absurd Person Singular

NEXT PRODUCTION

November 2016



the Importance of Being **EARNEST** by Oscar Wilde

John Worthing, a carefree young gentleman, is the inventor of a fictitious brother, "Ernest," whose wicked ways afford John an excuse to leave his country home and journey to London, where he stays with his close friend and confidant, Algernon Moncrieff.

During his London sojourns, John, under the name Ernest, has won the love of Gwendolen Fairfax. But when he asks for Gwendolen's hand from the formidable Lady Bracknell, John finds he must reveal he is a foundling who was left in a handbag at Victoria Station.

Returning to the country home where he lives with his ward Cecily Cardew and her governess Miss Prism, John finds that Algernon has also arrived under the identity of the non-existent brother Ernest.

With the arrival of Lady Bracknell and Gwendolen, chaos erupts. It is discovered that Miss Prism is the absent-minded nurse who twenty years ago misplaced the baby of Lady Bracknell's brother in Victoria Station. Thus John, whose name is indeed Ernest, is Algernon's elder brother, and the play ends with the two couples in a joyous embrace.

The Village Hall, Escrick
Thu 17th, Fri 18th & Sat 19th
November 2016 at 7.30pm



MONDAY PLAYERS ONLINE

LATEST NEWS

All the latest news from the society including announcements, upcoming events and society socials, new members, website updates and much more...

PAST PRODUCTIONS

All the shows we have produced since The Mondays Players was founded in 1993, which reflect our interests, ambitions and challenges over the years...

PHOTO AND VIDEO GALLERIES

Photos/videos from all the plays, pantomimes, cabarets and rehearsals down the years...

ABOUT US

History of the society, contact details for MP Officers and details of how to join our group...

PAST & PRESENT MEMBERS

Onstage and offstage history of all the members, past and present, plus those non-member helpers who have contributed to our productions...

FACEBOOK & TWITTER

The Monday Players are on Facebook and Twitter – please ‘LIKE’ us on Facebook and ‘FOLLOW’ us on Twitter:

Search ‘Monday Players’



@MondayPlayers



www.mondayplayers.com

THE PLAYWRIGHTS

Jimmie Chinn

Jimmie Chinn was an actor, teacher and most notably, a playwright. Jimmie was born in Middleton, Lancashire on 30 March 1940. His early years in Oldham and Manchester were to shape his writing in future years. He came to London in 1959 where he trained as an actor at RADA and worked in many aspects of the theatre. His short and very undistinguished career as an actor led him eventually to train as a teacher at Whitelands College, Putney, where he gained an honours degree in English and Drama. He taught and became a senior teacher and housemaster at Dormers Wells School in Middlesex from 1979 until becoming a full-time writer in 1984.

Jimmie's plays began to blossom from 1984 and his plays for radio and stage have been enjoyed all over the world. His television credits included Emmerdale, Coronation Street, and A Different Way Home.

On 18 March 1992 he had his first West End production. The play was Straight and Narrow which opened at the Wyndham's Theatre starring Nicholas Lyndhurst, Carmel McSharry and Neil Dalglish. It later moved to the Aldwych Theatre. The play was originally performed with his local theatre group, Theatre West Four in 1987.

Jimmie was diagnosed with COPD in the year 2000 and died after a long struggle with the illness on 29th January 2011.

David Tristram

David Tristram (born 1957, Quarry Bank, UK) is an English comic playwright. He has published twenty three plays, videos/two films and a comedy novel. Widely performed by amateur and professional groups, his plays have parodied such pop-culture genres as soap operas and detective stories.

Educated at Dudley Grammar School and Birmingham University, where he studied English and music, Tristram was a commercial copywriter before turning to comedy. In 1985 he founded the Flying Ducks Theatre Company, which has now become a professional touring company.

Tristram's plays take a farcical view of sex, alcohol, drugs, crime, and theatre itself. Tristram claims he writes only comedy because he can't take himself too seriously. He usually tests his new work at a small theatre in Bridgnorth near his home in Highley before wider release.

THANKS

We would like to thank the following persons / organisations for their contributions and for promoting and advertising our production:

CAWOOD

The Post Office

DEIGHTON

Happy Haddock

The White Swan

ESCRICK

Escrick & Deighton Club

Mrs Dixon

Village Hall

NABURN

Blacksmiths Arms

NORTH DUFFIELD

Kings Arms

OSGODBY

Wadkin Arms

RICCALL

Regen Centre

SELBY

Dragonfly Consulting

Fasprint

SKIPWITH

Drovers Arms

STILLINGFLEET

The Cross Keys

WISTOW

Black Swan

Fish n chip shop

WHELDRAKE

Costcutter

Studio One

Wenlock Arms



Please note that there will be no late admission after the commencement of the second play following the interval.



There will be an interval of 30 minutes between the plays when a raffle will be drawn (tickets available from members).



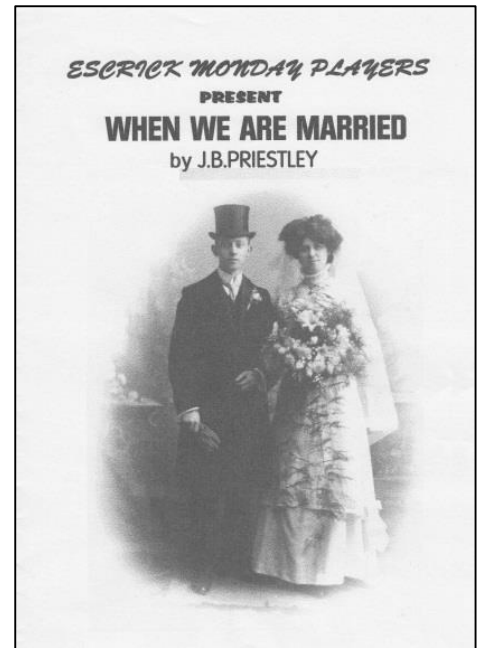
PLEASE NOTE THAT PHOTOGRAPHY AND/OR FILMING OF THE PERFORMANCE IS NOT PERMITTED. THANK YOU FOR YOUR CO-OPERATION.



20 YEARS AGO...

CAST

Ruby Birtle	Pat Davison
Gerald Forbes	Ian Bithell
Mrs Northrop	Kath Wilson
Nancy Holmes	Barbara Miller
Fred Dyson	David Lane
Henry Ormonroyd	Frank Atkinson
Alderman Helliwell	John Parkes
Maria Helliwell	Pam Newsholme
Co. Albert Parker	Brian Ledger
Annie Parker	Alma Belbin
Herbert Soppitt	Kevin Cruse
Clara Soppitt	Sadie Ashton
Lottie Grady	Jean White
Rev Clement Mercer	Simon Dowswell



When We Are Married

PLAYWRIGHT: J B Priestley

DATE: February 1996

DIRECTOR: Ken Davison

The play begins when a group of friends, all married on the same day in the same chapel, gathers to celebrate their silver anniversaries. When they discover that they are not legally married, they initially react with proper Victorian horror! But soon all three couples find themselves re-evaluating their marriages. In the end, of course, everything turns out well, and the play ends on a happy note.



THE White Swan DEIGHTON

Pub, Restaurant, En Suite Accommodation
Your Local home from home pub, serving great food in a relaxed friendly atmosphere

Now Offering Bed & Breakfast Accommodation

Monday
2 meals for £12

Wednesday
Dine & Wine £26

Saturday
Sizzling Grill

Tuesday
Pie & Pint

Friday
Fishtacular Friday

Sunday
Lazy Sunday

For full details of our offers please see our website, Facebook page or just telephone and speak to one of our friendly staff

01904 728822

www.whiteswan-deighton.co.uk
whiteswandeighton@gmail.com

fb.com/whiteswandeighton



@WhiteSwanYork



Every Wednesday from 2pm to 4pm

Escrick & Deighton Club

Come along to the friendly tea shop for a lovely cup of tea or coffee (free refills) and homemade cakes and scones.

Admission just £2 to include drinks and cake.
Children 50p.



Lifts can be arranged by ringing Pamela (01904 728423) or Roger (01904 728907)

Everyone very welcome for great company and wonderful homemade cakes and drinks

Look out for posters about **special events**

If you would like to volunteer to help in the tea shop please ring Judith (01904 728845)

If you would be happy to bake a cake we would be delighted – please ring Beth (01904 728569)

Next volunteers meeting Thursday 9th June at 7.30pm in the Club – all welcome

LODGE COTTAGE FARM SHOP

- Fresh fruit and vegetables (sourced locally when available)
- Locally made preserves (Mercer's of Wheldrake)
- Meat, bacon and hams from local suppliers
- Fresh bread, pies and cakes from local bakers
- Milk
- Salads



@lodgefarmshop



Lodge Cottage Farm Shop
A19 at Crockey Hill
York
YO19 4SJ

OPENING TIMES

MONDAY - 11am to 6pm

TUESDAY to FRIDAY - 9am to 6pm

SATURDAY - 9am to 5pm

SUNDAY - 10am to 4pm

01904 656171

www.lodgecottagefarmshop.co.uk

lodgecottagefarmshop@aol.co.uk



Tuesday -2 for £12 on selected main meals

Wednesday-Free pool & Charity Quiz every first Wednesday of the month

Thursday -Fantastic lunch offer, 2 courses £6.95 or 3 courses £8.95

Friday -Family Night. Feed 2 adults and 2 children for £25 from our sharing menu

-Cocktail Club every second Friday of the month

Saturday -Steak Night 5-9pm

Sunday -Lunch served 12-7pm followed by Pub Quiz at 8:30pm

FOOD SERVED TUESDAY TO SATURDAY 12-9PM

& SUNDAY 12-7PM

LARGE BEER GARDEN

CASK MARQUE ALES

POOL TABLE & DART BOARD

COME AND ENJOY THE
WARM, FRIENDLY WELCOME

The Black Swan

Church Hill

Wistow

YO8 3UU

Tel: (01757) 268284

E: info@blackswanwistow.com

www.blackswanwistow.com

www.facebook.com/blackswanwistow

**20% off your
food bill with this
voucher**

Offer subject to availability. Not to be used in
conjunction with any other offer. Valid until
29/11/16

A RESPECTABLE FUNERAL

THE CAST

**Evadne
Joyce
Greta
Charlie**

**Nicki Clay
Jill Pearson
Pam Newsholme
Nick Leaf**

DIRECTOR

Linda Baillie

ASSISTANT DIRECTOR

Barbara Miller

LAST TANGO IN ESCRICK

THE CAST

**Gordon
Bernard
Joyce
Margaret**

**Graeme Parker
David Lane
Karen McLeod
Linda Baillie**

DIRECTOR

Andrew Faulkes

ASSISTANT DIRECTOR

Sadie Ashton

THE PRODUCTION TEAMS

SET DESIGN

David Lane

SET CONSTRUCTION

David Lane with Andrew Faulkes
John Parker and Nick Leaf

LIGHTING

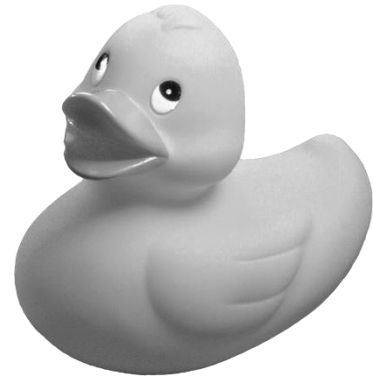
Ken Davison
Pat Davison

SOUND

Karen McLeod (ARF)
Nicki Clay (LTIE)

TRANSPORT

Nick Leaf



PROMPT

Norma Nicholson

PROPS

Sadie Ashton

PROGRAMME & POSTER DESIGN

Graeme Parker

TICKET SALES

Sadie Ashton
Pamela Yates

FRONT OF HOUSE

Pamela Yates and Joy Young
with
David Newsholme, John Parker,
Pat Parker and Terry Yates

BAR

Anita Shipley and Barrie Shipley