



Mister C's

Award Winning Fish & Chips

01757 701913

Fresh from the sea...
straight from the soil



Why not come and enjoy a meal in our fully licensed Restaurant.
Mark, Denise, Danny, Michael & Amy hope you enjoy your meal

Contact us: 01757 701913 | email: info@mistercs.co.uk
61-63 Micklegate, Selby, North Yorkshire, YO8 4EA



**There will be an interval of 5 minutes between
Act One and Act Two (please remain seated).**

**There will be an interval of 20 minutes between Act Two and Act Three
when a raffle will be drawn (tickets available from members).
Soft drinks and choc ices will also be available to purchase.**

The play will finish at approximately 10.15pm.



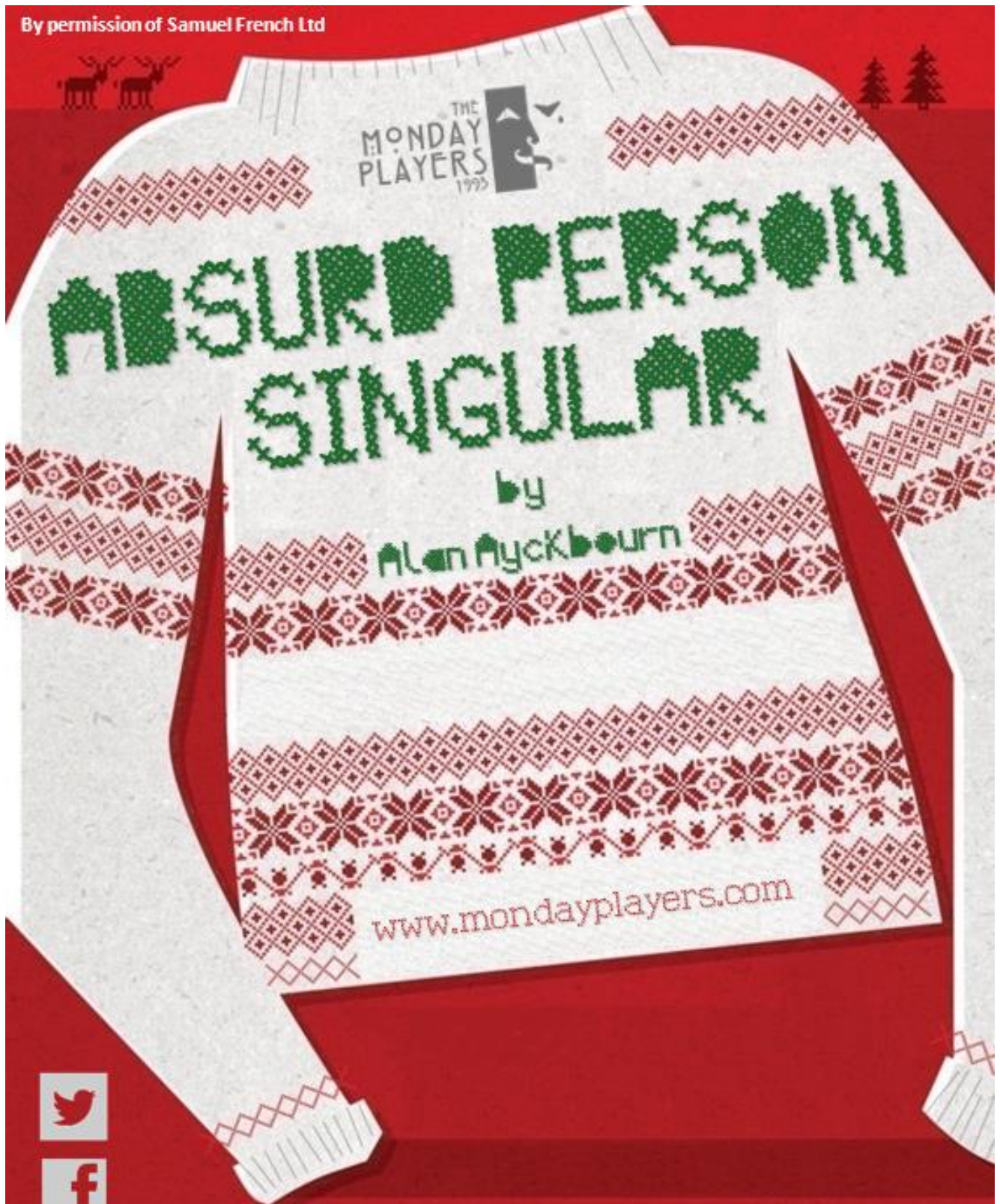
**PLEASE NOTE THAT THE CONSUMPTION OF ALCOHOL
IS NOT PERMITTED DURING THE PERFORMANCE.
THANK YOU FOR YOUR CO-OPERATION.**



**PLEASE NOTE THAT PHOTOGRAPHY AND/OR
FILMING OF THE PERFORMANCE IS NOT PERMITTED.
THANK YOU FOR YOUR CO-OPERATION.**



By permission of Samuel French Ltd



free

The Village Hall, Escrick

Thu **19** Fri **20** Sat **21**

November 2015 at 7.30pm

Hurry, we have now started running our winter event



A massive 32% discount off our entire range

Don't delay as limited dates are available it will be a first come first serve basis
All our products are high on security and energy efficiency

Free No obligation quotation. Free 10 year insurance backed guarantee (see website for details)
After Sales service second to none

We are Open 7 days a week with Free and easy parking
North Yorkshire's leading home improvement company where quality needn't cost the earth



Eliments

The pursuit of harmony

Windows, Doors, Fascia & Soffits, Wide Range of Orangeries & Conservatories, Garage Conversions or Small Extensions

WE WILL BEAT ANY GENUINE LIKE FOR LIKE QUOTE



WE'RE ON FACEBOOK!

Bell Farm | Riccall Road (A19) | Escrick | York | YO19 6ED

QUALITY PVCu CONSERVATORIES, DOORS & WINDOWS

01904 360065

info@eliments.co.uk www.eliments.co.uk

Discover A True Sanctuary

Nestled Deep In The Heart Of The Beautiful Yorkshire Countryside



At Hollicarrs, your second home awaits. Secluded and secure it provides a glorious woodland retreat, where your greatest dilemma becomes whether to cast off, take a stroll or just to relax and enjoy the peace and quiet. Why not find out more and, from as little as £99,995, you could soon make Hollicarrs your natural home.

Hollicarrs
ESCRICK PARK

NATURE'S HOME SWEET HOME

www.escrick.com • t: 0800 9808070 • e: qualitytime@escrick.com

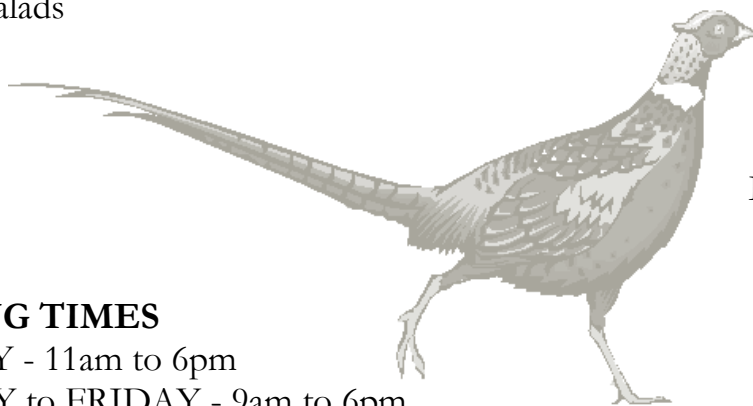
OFFERING BEAUTIFUL AND EXCLUSIVE HOLIDAY HOME OWNERSHIP

LODGE COTTAGE FARM SHOP

- Fresh fruit and vegetables (sourced locally when available)
- Locally made preserves (Mercer's of Wheldrake)
- Meat, bacon and hams from local suppliers
- Fresh bread, pies and cakes from local bakers
- Milk
- Salads



@lodgefarmshop



Lodge Cottage Farm Shop
A19 at Crockey Hill
York
YO19 4SJ

OPENING TIMES

MONDAY - 11am to 6pm

TUESDAY to FRIDAY - 9am to 6pm

SATURDAY - 9am to 5pm

SUNDAY - 10am to 4pm

01904 656171

www.lodgecottagefarmshop.co.uk

lodgecottagefarmshop@aol.co.uk



The Fat Abbot



Enjoy a warm welcome, delicious home cooked food
with quality ales and selected wines.

For further details please call or email

Tel: 01904 728782 Email: thefatabbot@parsonagehotel.co.uk

www.fatabbotyork.co.uk

The Fat Abbot Gastro Pub, Main Street, Escrick, York YO19 6LF

PAST PRODUCTIONS

1993

Dec Season's Greetings

1995

May The Happiest Days Of Your Life

1996

Feb When We Are Married

Nov Fish Out Of Water

1997

May Breath Of Spring

Nov Bedroom Farce

1998

May Suddenly At Home

Nov Flying Feathers

1999

May Cabaret Evening

Nov Stepping Out

2000

Apr The Farndale Avenue Housing
Estate Townswomen's Guild
Dramatic Society Murder Mystery

Jun Millennium Cabaret

Nov Celebration

2001

May Last Tango In Whitby

Nov Fringe Benefits

2002

Jun Separate Tables / Dress Rehearsal

2003

Jan Red Riding Hood

May Joking Apart

Nov Blithe Spirit

2004

Mar Sand Castles

Jun Cabaret 2004

Nov Daisy Pulls It Off

2005

May 'Allo 'Allo

Nov Lord Arthur Savile's Crime

2006

May Witness For The Prosecution

Nov Party Piece

2007

May Outside Edge

Nov Caramba's Revenge

2008

Apr Comic Potential

Nov Angels In Love

2009

May Cabaret 2009

Nov Natural Causes

2010

May Pygmalion

Nov Taking Steps

2011

May Habeas Corpus

Nov Role Play

2012

May Diamond Jubilee Cabaret

Nov Key For Two

2013

May Ladies' Day

Nov Season's Greetings

2014

May Salt Of The Earth

Nov Relative Values

2015

May The Odd Couple

Nov Absurd Person Singular

CHAIR'S MESSAGE

Welcome to our latest play offering...

... Absurd Person Singular by Alan Ayckbourn.

I thought it was about time I gave this directing lark a go, after having decided upon the play about 3 years ago. I'd heard of Absurd Person Singular before but had considered its title somewhat...odd! I had expected the play itself to be...well...absurd!

After seeing Ayckbourn's latest revival of the play (SJT Scarborough), I soon realised the play itself wasn't odd, the characters however, were a little absurd! I'd read that Ayckbourn had shelved another of his plays, which he had called Absurd Person Singular, yet had loved the title so much that he swapped it for this play! In typical style, it is simply a story which portrays the worst side of people.

Ayckbourn doubts anyone would willingly choose to become friends with the characters he creates - I agree!

The planning phase began back in June and then the doubts kicked in! This was my first attempt at directing and I had chosen a play with a very complicated set. I was going to need three kitchens, a washing machine, oven, fridge, tables, chairs and the rest! Not only was I concerned about space and storage but how could we obtain all this furniture and not blow the budget? In the end I decided upon part-minimalist staging, hoping our audience will use their imagination to fill the spaces.

Directing this play has been a very enjoyable, positive and rewarding experience. I have had incredible support and commitment from everybody involved. The cast were even rehearsing without scripts way ahead of schedule. I might have another go at this directing lark!

I would also like to take this opportunity to extend a very warm welcome to our newest member Mike Waters.

And finally...thank you to our audience and sponsors for your continued support and patronage. It is, as always, greatly appreciated. I hope you enjoy our play.



Nicki

ABSURD PERSON SINGULAR

by **Alan Ayckbourn**

Absurd Person Singular is a 1972 play by Alan Ayckbourn. Divided into three acts, it documents the changing fortunes of three married couples. Each act takes place at a Christmas celebration at one of the couples' homes on successive Christmas Eves.

The play made its world premiere at the Library Theatre, Scarborough on 26 June 1972 and its London début at the Criterion Theatre on 4 July 1973, transferring to the Vaudeville Theatre in September 1974, completing a run of 973 performances.



Its official New York Broadway début was at the Music Box Theatre on 8 October 1974. It ran for 591 performances in its first run on Broadway (through March 1976). It was revived on Broadway on 18 October 2005 at the Biltmore Theatre, for 56 performances.

The BBC produced a television drama, adapted from the play, first broadcast on 1 January 1985. It was directed by Michael Simpson and starred John Baddeley, Cheryl Campbell, Michael Gambon, Nicky Henson, Lesley Joseph, Maureen Lipman, Geoffrey Palmer and Prunella Scales.

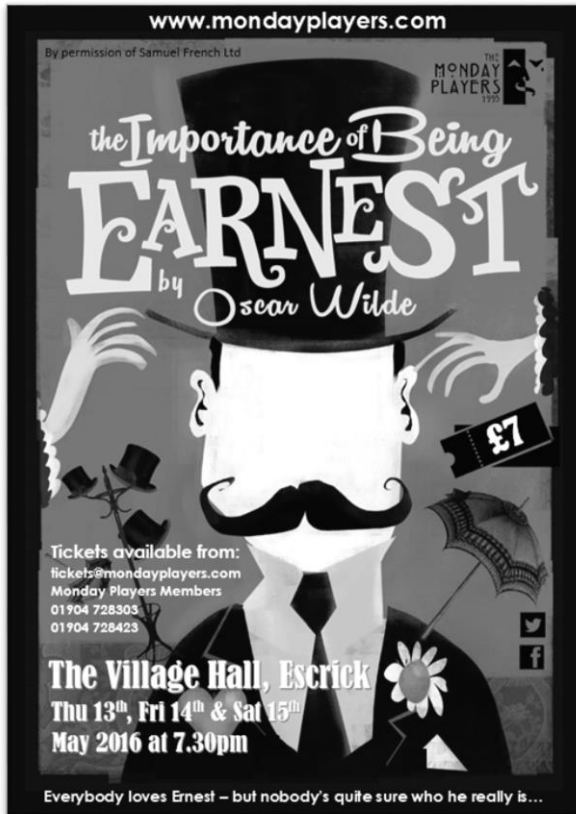
The play was revived in the West End at the Whitehall Theatre, May 1990 and at the Garrick Theatre in December 2007. A new production was staged during May 2011 at the new Curve Theatre in Leicester, starring Tracy-Ann Oberman and Louise Plowright and directed by Paul Kerryson.

The play was revived once again at the Stephen Joseph Theatre in Scarborough – 40 years after its original run there – in 2012.

NEXT PRODUCTION

May 2016

the Importance of Being **EARNEST** *by Oscar Wilde*



John Worthing, a carefree young gentleman, is the inventor of a fictitious brother, “Ernest,” whose wicked ways afford John an excuse to leave his country home and journey to London, where he stays with his close friend and confidant, Algernon Moncrieff.

During his London sojourns, John, under the name Ernest, has won the love of Gwendolen Fairfax. But when he asks for Gwendolen’s hand from the formidable Lady Bracknell, John finds he must reveal he is a foundling who was left in a handbag at Victoria Station.

Returning to the country home where he lives with his ward Cecily Cardew and her governess Miss Prism, John finds that Algernon has also arrived under the identity of the non-existent brother Ernest.

With the arrival of Lady Bracknell and Gwendolen, chaos erupts. It is discovered that Miss Prism is the absent-minded nurse who twenty years ago misplaced the baby of Lady Bracknell’s brother in Victoria Station. Thus John, whose name is indeed Ernest, is Algernon’s elder brother, and the play ends with the two couples in a joyous embrace.

The Village Hall, Escrick
Thu 13th, Fri 14th & Sat 15th
May 2016 at 7.30pm



MONDAY PLAYERS ONLINE

LATEST NEWS

All the latest news from the society including announcements, upcoming events and society socials, new members, website updates and much more...

PAST PRODUCTIONS

All the shows we have produced since The Mondays Players was founded in 1993, which reflect our interests, ambitions and challenges over the years...

PHOTO AND VIDEO GALLERIES

Photos/videos from all the plays, pantomimes, cabarets and rehearsals down the years...

ABOUT US

History of the society, contact details for MP Officers and details of how to join our group...

PAST & PRESENT MEMBERS

Onstage and offstage history of all the members, past and present, plus those non-member helpers who have contributed to our productions...

FACEBOOK & TWITTER

The Monday Players are on Facebook and Twitter – please 'LIKE' us on Facebook and 'FOLLOW' us on Twitter:

Search 'Monday Players'

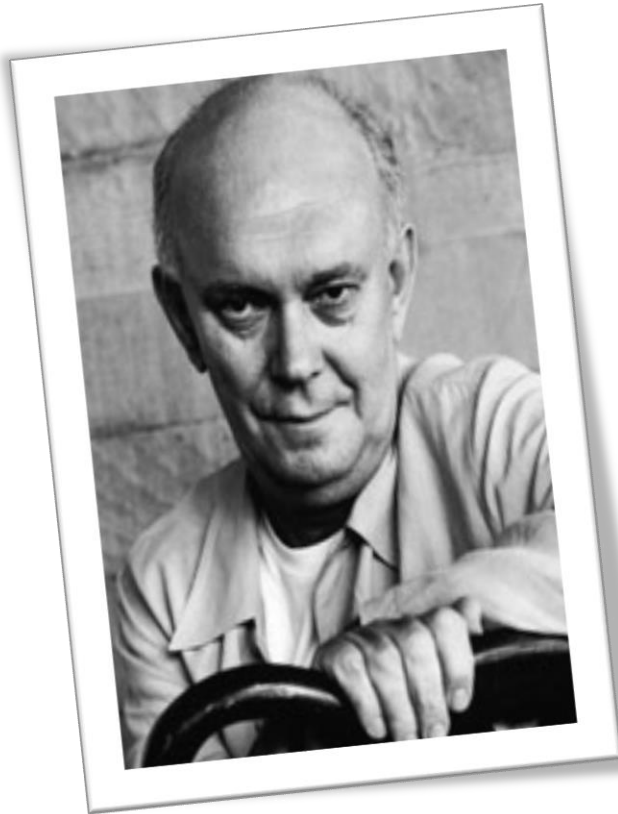


@MondayPlayers



www.mondayplayers.com

SIR ALAN AYCKBOURN



Sir Alan Ayckbourn, CBE (born 12 April 1939) is a prolific English playwright. He has written and produced more than seventy full-length plays in Scarborough and London and was, between 1972 and 2009, the artistic director of the Stephen Joseph Theatre in Scarborough.

More than 40 have been produced in the West End, at the Royal National Theatre or by the Royal Shakespeare Company since his first hit *Relatively Speaking* opened at the Duke of York's Theatre in 1967.

His plays have been translated into over 35 languages and are performed on stage and television throughout the world.

Ayckbourn was born in Hampstead, London. His mother Irene Worley ("Lolly") was a writer of short stories who published under the name "Mary James". His father, Horace Ayckbourn, was an orchestral violinist and, at one time, deputy leader of the London Symphony Orchestra.

Ayckbourn attended Haileybury and Imperial Service College, in the village of Hertford Heath, and whilst there toured Europe and America with the school's Shakespeare company. After leaving school at 17, Ayckbourn's career took several temporary jobs in various places before starting a job at the Scarborough Library Theatre, where he was introduced to the artistic director, Stephen Joseph. It is said that Joseph became both a mentor and father figure for Ayckbourn until his untimely death in 1967.

Ayckbourn's career was briefly interrupted when he was called for National Service. He was swiftly discharged, officially on medical grounds, but it is suggested that a doctor who noticed his reluctance to join the Armed Forces deliberately failed the medical as a favour. Although Ayckbourn continued to move where his career took him, he settled in Scarborough, eventually buying Longwestgate House, the house formerly owned by Stephen Joseph.

THANKS

We would like to thank the following persons / organisations for their contributions to this production:

Lydia Ebdon (kitchen units and fridge)
Dave Spencer (donation of set materials)
York Freecycle (washing machine)
Nic Spencer (farmhouse table and chairs)
Riccallish Allsorts (kitchen table)
Tom Metcalfe (kitchen dresser table)
Sandra and Adrian Clay (armchair)
Dragonfly Consulting, Selby
Escrick Club
Fasprint, Selby
Kevin Sarginson – Cabinet Maker & Joiner

We would also like to thank the following businesses for promoting and advertising our production:

CAWOOD

The Castle Inn
The Ferry Inn
The Jolly Sailor
The Post Office

CROCKEY HILL

Lodge Cottage Farm Shop

DEIGHTON

Happy Haddock
The White Swan

ESCRICK

The Black Bull
Cloisters Spa
The Fat Abbot
The Parsonage
Sangthai
Village Hall

NABURN

Blacksmiths Arms

NORTH DUFFIELD

Kings Arms

OSGODBY

Selby Garden Centre

Wadkin Arms

RICCALL

The Greyhound
Hare and Hounds
JP Davids
Post Office
Regen Centre
Riccall Butchers

SELBY

Choo Chews Café
Sainsbury's

SKIPWITH

Drovers Arms

STILLINGFLEET

The Cross Keys

THORGANBY

Jefferson's Arms

WISTOW

Black Swan
Fish n chip shop

WHELDRAKE

Costcutter
The Post Office
Wenlock Arms

YORK

New Earswick Bowls
Club
The Retreat

MEMORY LANE

20 years ago...

CAST

Dick Tassell	John Parkes
Rainbow	Frank Atkinson
Rupert Billings	David Lane
Godfrey Pond	Geoffrey Harris
Miss Whitchurch	Margaret Clarkson
Miss Gossage	Jill Whickham
Hopcroft Mi	Jean White
Barbara Cahoun	Gill Adams
Joyce Harper	Alma Belbin
Rev Edward Peck	Simon Dowswell
Mrs Peck	Tricia Lane
Edgar Souter	Derek Clarkson
Mrs Souter	Pam Newsholme



The Monday Players
Proudly Present

The Happiest days of your life

by John Dighton

in Escrick Village Hall
on Saturday 20th May 1995
at 7.30pm

Price £3.00 Adults
£2.50 OAP and Children

The Happiest Days Of Your Life

PLAYWRIGHT: John Dighton

DATES: 20th May, 1995

DIRECTOR: Sadie Ashton

Set after World War II, this delightful farce is about what happens when a boys' school receives the news that they are to billet another school which is all female. Events are complicated by the arrival of the parents.

Each headmaster/mistress tries to conceal the fact that his/her school is now co-ed. Eventually, the parents learn the truth and are about to remove their children when news arrives that a third school is to be amalgamated into theirs. They all join together to keep out these intruders.

THE White Swan DEIGHTON



Pub, Restaurant, En Suite Accommodation

Your Local home from home pub, serving great food in a relaxed friendly atmosphere

Now Offering Bed & Breakfast Accommodation

Monday
2 meals for £12

Tuesday
Pie & Pint

Wednesday
Dine & Wine £26

Friday
Fishtacular Friday

Saturday
Sizzling Grill

Sunday
Lazy Sunday

For full details of our offers please see our website, Facebook page or just telephone and speak to one of our friendly staff

LET'S GET QUIZZICAL????

Fun Quiz Every Thursday @ 9pm
£1 entry per person (maximum 5 per team)
1st prize = £20 pub voucher
2nd prize = £10 pub voucher
Complimentary nibbles
&
Play Your Cards Right-With a cash prize

Come along and join in the fun

01904 728822

www.whiteswan-deighton.co.uk
whiteswandeighton@gmail.com

fb.com/whiteswandeighton

[@WhiteSwanYork](https://twitter.com/WhiteSwanYork)





*Jessica & Richard would like
to welcome you to the
Black Swan, Wistow*

*A traditional village pub
serving home cooked food
12-9pm Tuesday to Saturday
and 12-7pm Sunday*

Real Ale, great wine and cocktails

To book please call us on (01757) 268284

Www.blackswanwistow.com

Www.facebook.com/blackswanwistow

Join us for Christmas

Christmas Menu

£14.95 for 2 courses £17.95 for 3 courses

Starters

*Butternut squash soup with warm petit pain
Game, apple & blackberry pate with melba toast
Ham hock terrine*

Mains

*Roast turkey with stuffing & pigs in blankets
Christmas Pie
Salmon served with chardonnay sauce
Mushroom, brie, rocket & redcurrants wrapped in filo pastry
All served with roast potatoes & parsnips and seasonal vegetables
Sirloin steak served with chips, mushroom, tomato & garlic butter
£2.00 supplement*

Desserts

*Christmas pudding
Lemon sorbet with ginger crumble
Chocolate torte*



Dog Tired is a friendly and reliable professional dog walking and pet sitting service, operating in and around Easingwold and York. We provide: dog walking, pet sitting, pet feeding, puppy visits, dog home boarding and a pet taxi service.

We are fully licensed, insured and CRB checked.

www.yorkdogtired.co.uk

info@yorkdogtired.co.uk

07706 045405

Dog Tired wishes The Monday Players a very successful production of
Absurd Person Singular

THE CAST

Sidney Hopcroft

Jane Hopcroft

Ronald Brewster-Wright

Marion Brewster-Wright

Geoffrey Jackson

Eva Jackson

Dick Potter (voice)

Lottie Potter (voice)

Graeme Parker

Lisa Valentine

David Lane

Jill Pearson

Nick Leaf

Sophie Griffiths

Mike Waters

Linda Baillie

THE PLAY IS SET IN THE 1970s

ACT ONE

'Last Christmas' – Sidney and Jane's kitchen

ACT TWO

'This Christmas' – Geoffrey and Eva's kitchen

ACT THREE

'Next Christmas' – Ronald and Marion's kitchen

There will be an interval of 5 minutes between
Act One and Act Two (please remain seated).

There will be an interval of 20 minutes between Act Two and Act Three
when a raffle will be drawn (tickets available from members).
Soft drinks and choc ices will also be available to purchase.

The play will finish at approximately 10.15pm.

THE CREW

DIRECTOR

Nicki Clay

ASSISTANT DIRECTOR

Linda Baillie

SET DESIGN

David Lane, Dave Spencer
and Nicki Clay

SET CONSTRUCTION

David Lane with Dave Spencer
John Parker, Robert Hardcastle
and Nick Leaf

STAGE MANAGER

Barbara Miller

STAGE CREW

Linda Baillie, Mike Waters
and Samuel Valentine

LIGHTING

Ken Davison
David Belbin

SOUND

John Parker

TRANSPORT

Nick Leaf

PROMPT

Pamela Yates
Nicki Clay

PROPS

Pam Newsholme
Barbara Hardcastle

COSTUME

Sadie Ashton

PROGRAMME & POSTER DESIGN

Graeme Parker

TICKET SALES

Sadie Ashton
Pamela Yates

FRONT OF HOUSE

Pamela Yates and Joy Young
with
Sadie Ashton, Alma Belbin, Pat Davison
Andrew Faulkes, Robert Hardcastle
David Newsholme, Anita Shipley
and Terry Yates

**Please note that there will be no late admission after the
commencement of the play following the interval.**